

Converter 556

Converter for Turbidity Measurement



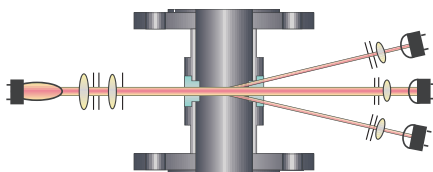
- Inline real-time process monitoring
- 3-digit LED display
- 0/4 - 20 mA-output
- 2 independent alarm setpoints
- Reliable cost effective measurements
- Compact dimensions

The 556 converter provides continuous inline, real-time measurement and control of turbidity in a variety of industrial processes. The customer's specific factory calibration of the converter can be configured in ppm, FTU or EBC.

With four fixed measuring ranges and one variable measuring range, the 556 can be set to match your specific process parameters. The 3-digit LED indicator displays the percentage of selected measuring range.

Two independent setpoints and one mA output are provided by the converter for alarms and real-time process monitoring when wired to the plant's process control system. An additional failsafe relay output is built in for remote sensing of lamp or power failure.

Combined with a high-precision scattered light turbidimeter TF56, the 556 is a cost-saving measuring system that provides reliable inline measurements throughout your process.



Sensor TF56

Technical Data

Converter 556



Housing:

19"-version for rack mounting (front IP40, rear IP20), 3 HE / 21 TE

Dimensions:

106 x 116 x 190 mm deep
(4.18 x 4.57 x 7.49 inch deep)

Weight:

2.0 kg

Display:

1 digital display, 3-digits, LED, height: 7 mm
1 LED (red): power on
1 LED (green): zero
5 LED (yellow): range
2 LED (red): alarm I and II
1 LED (red): lamp or system failure

Measuring ranges:

0 - 50 ppm, 0 - 100 ppm, 0 - 250 ppm, 0 - 500 ppm,
variable 0 - 25 ... 500 ppm (factory set 0 - 25 ppm)
0 - 20 FTU, 0 - 40 FTU, 0 - 100 FTU, 0 - 200 FTU,
variable 0 - 10 ... 200 FTU (factory set 0 - 10 FTU)
0 - 5 EBC, 0 - 10 EBC, 0 - 25 EBC, 0 - 50 EBC,
variable 0 - 2.5 ... 50 EBC (factory set 0 - 2.5 EBC)

Resolution:

< ± 0.5 % of respective measuring range

Repeatability:

< ± 1 % of respective measuring range

Linearity:

specific to application, < ± 2 % with standard solution

Response time:

1 second

Power supply (fixed):

115 / 230 V AC selectable or 24 V AC / DC

Power consumption:

30 VA

Cable lengths:

standard: 5, 10, 20, 35, 50 m, (16, 33, 66, 115, 164 ft.)
maximum: 250 m, (820 ft.)

mA-output:

0/4 - 20 mA (load: 0 - 500 Ohm) galvanically isolated (> 500 V DC)

Alarm output:

2 independent adjustable SPDT contacts

Failsafe:

1 SPDT contact to alarm in case of lamp or system failure (active)

Ambient temperature:

operation: 0 °C up to +50 °C, (+32 °F up to +122 °F)
(no direct light)
transport: -20 °C up to +70 °C, (-4 °F up to +158 °F)

Requirements:

EN 61010-1 / 2002-08 / class 1

Certificates:

ISO 9001:2000, GS, CE

Use with sensor TF56!

Options



B19-21 Housing
plastic, IP66 (1 converter)



B19-42 Housing
plastic, IP66 (2 converters)



S19-42 Housing
stainless steel, IP65 (2 converters)

W19 Mounting assembly
for wall-mounting